

SECTION 10, T.7N., R.3E., S.L.B. & M.

IN WEBER COUNTY

SCALE 1" = 400'

TAXING UNIT: 58

SEE PAGE 13-1

U.S.A.
230130014
80 AC
(TOTAL 120 AC)

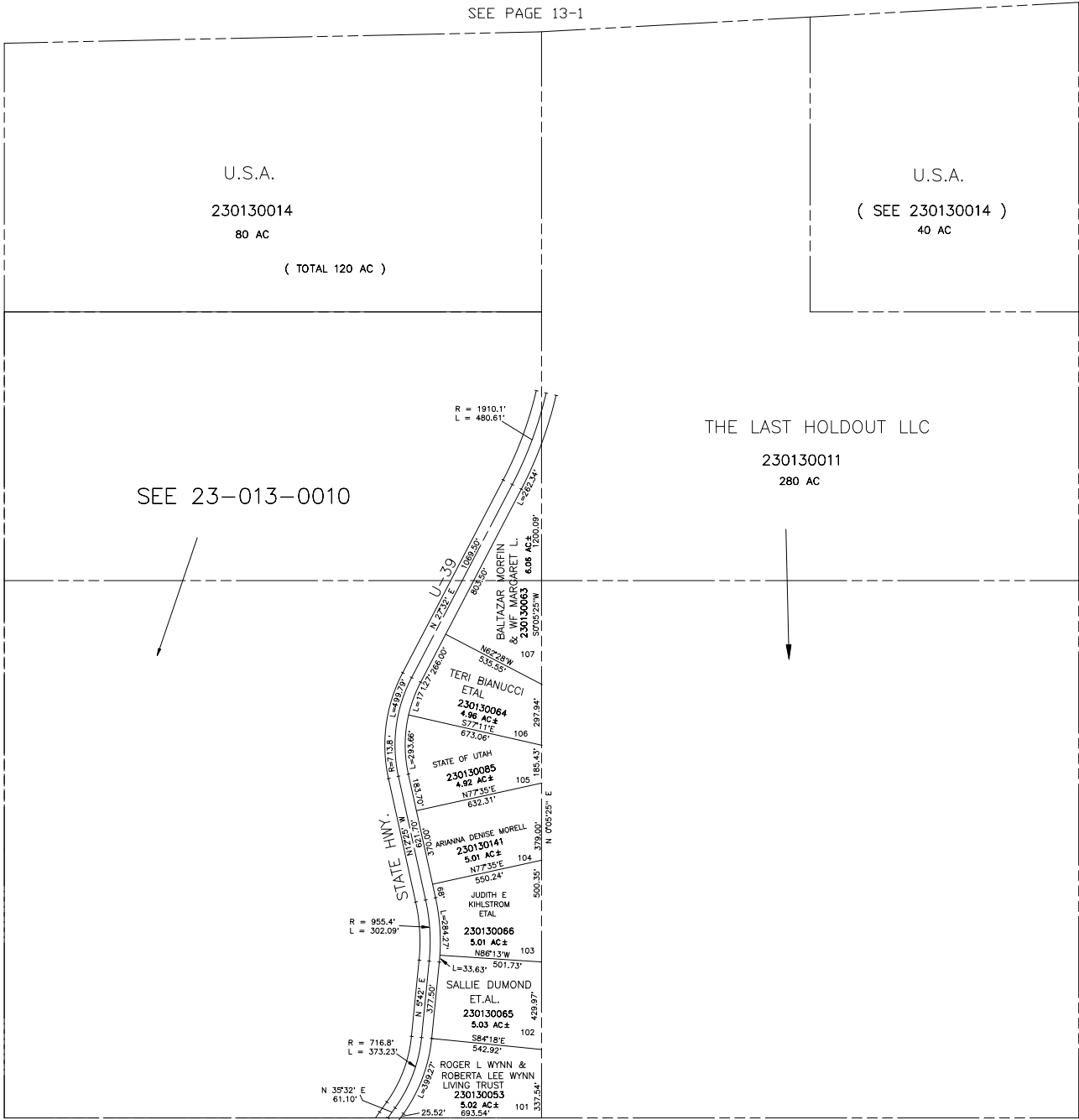
U.S.A.
(SEE 230130014)
40 AC

SEE 23-013-0010

THE LAST HOLDOUT LLC
230130011
280 AC

SEE PAGE 13

SEE PAGE 13



SEE PAGE 13-4

NOTE: THIS PLAT CONTAINS ALL OF
LOTS 101 THRU 107 IN THE
UNRECORDED BEAVER CREEK
ESTATES SUBDIVISION